



BACK ON MARKET



FOR SALE

28,608 SF RETAIL COMPLEX

2695 CREEKSIDE DRIVE, TWINSBURG, OHIO 44087

QUICK STATS

BUILDING SIZE: 28,608 SF

LAND: 0.72 AC

CONSTRUCTION: Masonry

YEAR BUILT: 2001

CONDITION: Excellent

ZONING: C-3
(Interchange
Business)

SPRINKLERS: Wet

CLEAR HEIGHT: 16'

AIR-CONDITIONED: 100%

DELIVERY DOCK: One (1)

LIGHTING: T-8

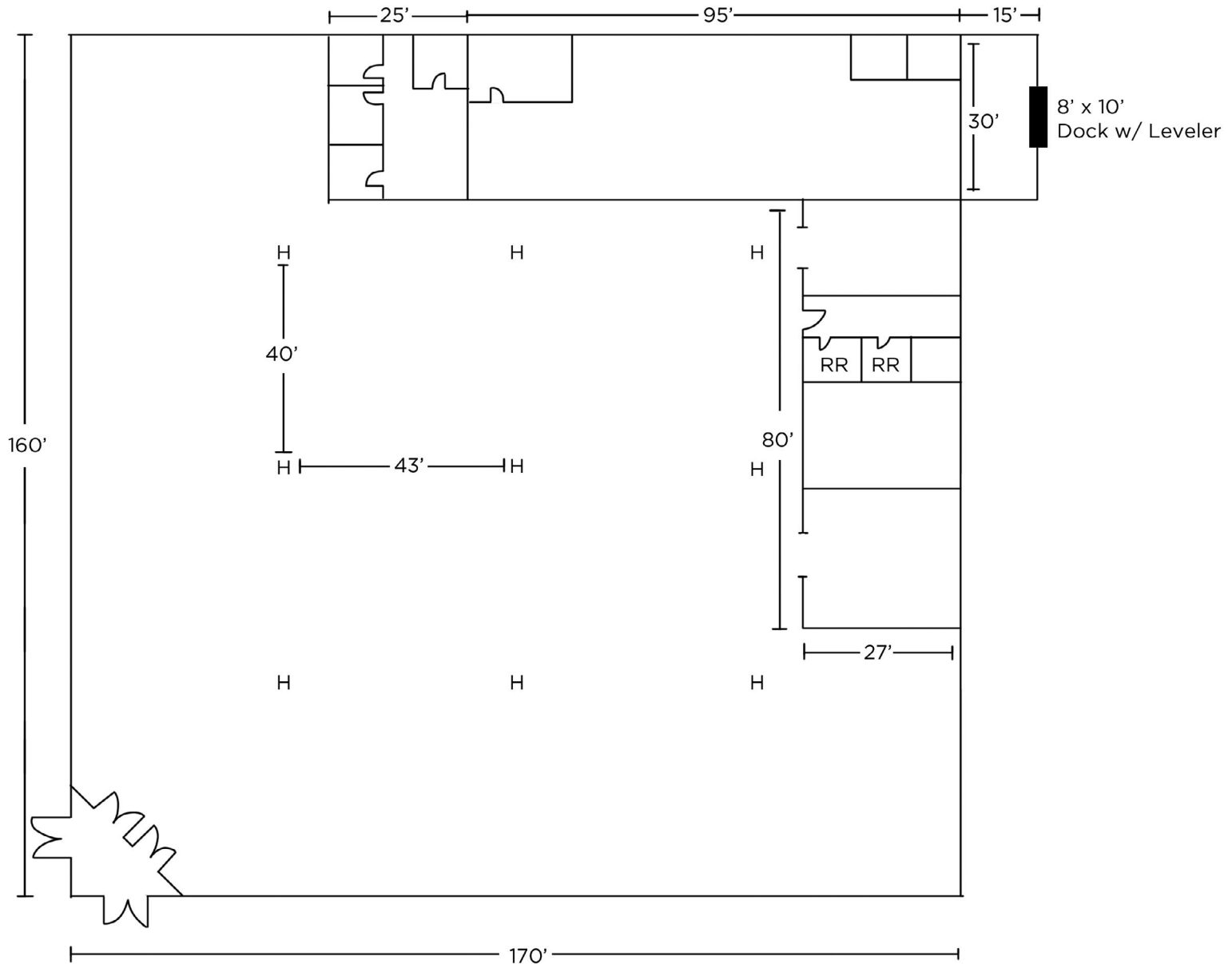


COMMENTS

- Former Gander Mountain retail complex ideally located in a well planned affluent retail/commercial district
- Immediately available for sale or lease
- Motivated owner
- High visibility - conveniently located at the State Route 91 interchange of I-480 (44,558 VPD)
- Well maintained with masonry construction
- Abundance of surface parking
- Signage opportunities on building as well as pylon sign along Darrow Road

FLOOR PLAN

28,608 SF Available





85,814
POPULATION



33,521
HOUSEHOLDS



43.2
MEDIAN AGE



\$127,905
AVG HH INCOME



3,717
BUSINESSES



62,489
EMPLOYEES



**GREAT I-480
VISIBILITY**

2695 CREEKSIDE DR





CONTACT US

RYAN FISHER

Senior Vice President
+1 216 525 1497
rfisher@crescorealestate.com

ALEX SMITH

Senior Associate
+1 216 525 1490
asmith@crescorealestate.com

SIMON CAPLAN, SIOR

Executive Vice President
& Partner Emeritus
+1 216 525 1472
scaplan@crescorealestate.com

6100 Rockside Woods Blvd, Suite 200
Cleveland, Ohio 44131
Main +1 216 520 1200
crescorealestate.com

