

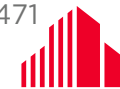
3690 ORANGE PLACE, SUITE 150

Beachwood, Ohio, 44122

Dental Office Space / For Sublease



ERIC M. SCHREIBMAN, J.D. / Vice President / eschreibman@crescorealestate.com / +1 216 525 1471
RICO A. PIETRO, SIOR / Principal / rpietro@crescorealestate.com / +1 216 525 1473



**CUSHMAN &
WAKEFIELD**



3690 ORANGE PLACE, SUITE 150

Beachwood, Ohio, 44122

Dental Office Space / For Sublease

SUBLEASE SPACE

Suite 150: 1,766 SF

RENT

\$20.75/SF Gross + Electric

BUILDING AMENITIES

- Building conference facility
- Professional best-in-class property management & five night per week janitorial cleaning services
- Covered garage parking
- Storage space available
- Updated common areas and mechanical (hvac, elevators, etc)
- Walking distance to Pinecrest with an abundance of options for dining, night life, hotel, shopping and much more!

SPACE HIGHLIGHTS

- Suite is immediately off the lobby
- Term through August 2026
- High profile address in recognizable Beachwood medical office building
- Newly remodeled plug and play dental practice - furniture and equipment can remain
- Plumbing in place to expand to a fourth (4th) operatory



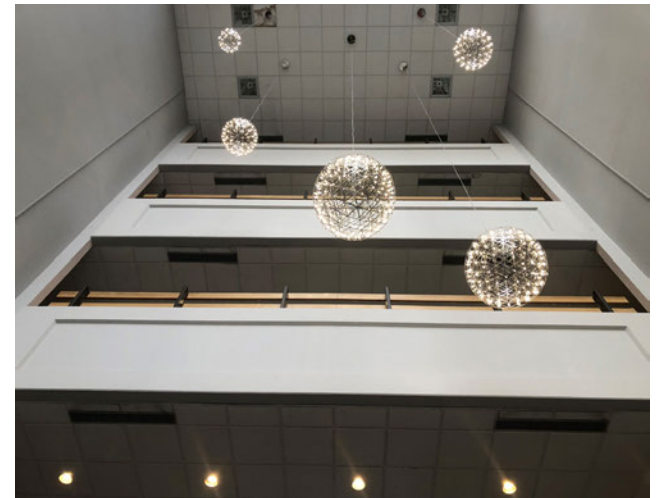
ERIC M. SCHREIBMAN, J.D. / Vice President / eschreibman@crescorealestate.com / +1 216 525 1471
RICO A. PIETRO, SIOR / Principal / rpietro@crescorealestate.com / +1 216 525 1473



3690 ORANGE PLACE, SUITE 150

Beachwood, Ohio, 44122

Dental Office Space / For Sublease



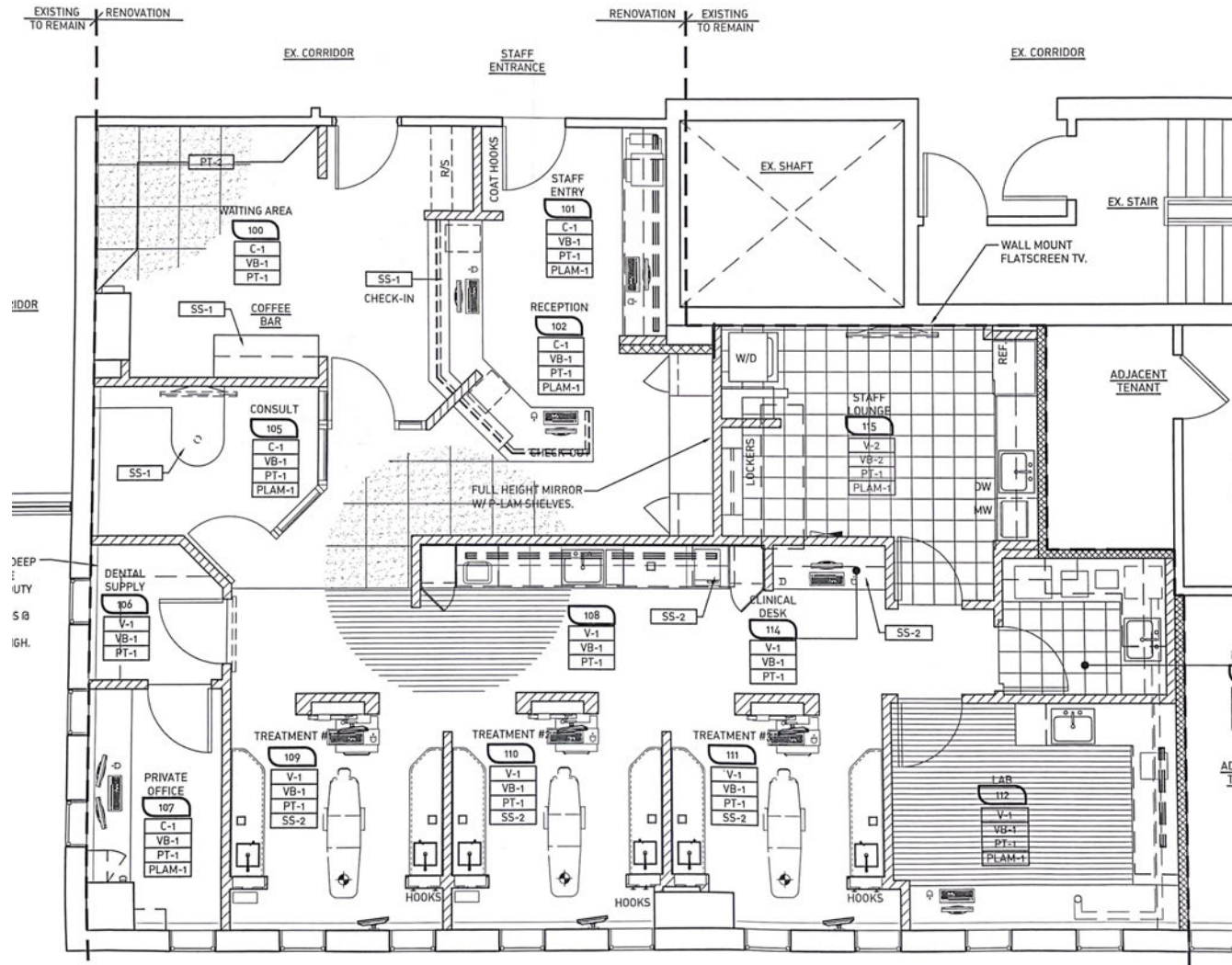
ERIC M. SCHREIBMAN, J.D. / Vice President / eschreibman@crescorealestate.com / +1 216 525 1471
RICO A. PIETRO, SIOR / Principal / rpietro@crescorealestate.com / +1 216 525 1473



3690 ORANGE PLACE, SUITE 150

Beachwood, Ohio, 44122

Dental Office Space / For Sublease



ERIC M. SCHREIBMAN, J.D. / Vice President / eschreibman@crescorealestate.com / +1 216 525 1471
RICO A. PIETRO, SIOR / Principal / rpietro@crescorealestate.com / +1 216 525 1473



3690 ORANGE PLACE, SUITE 150

Beachwood, Ohio, 44122

Dental Office Space / For Sublease



ERIC M. SCHREIBMAN, J.D. / Vice President / eschreibman@crescorealestate.com / +1 216 525 1471
RICO A. PIETRO, SIOR / Principal / rpietro@crescorealestate.com / +1 216 525 1473

