



FOR LEASE

# INCREDIBLE LOCATION OFFICE SPACE

2900 CARNEGIE AVENUE, CLEVELAND, OHIO 44115

# 2900 CARNEGIE AVE CLEVELAND, OH 44115

## OVERVIEW

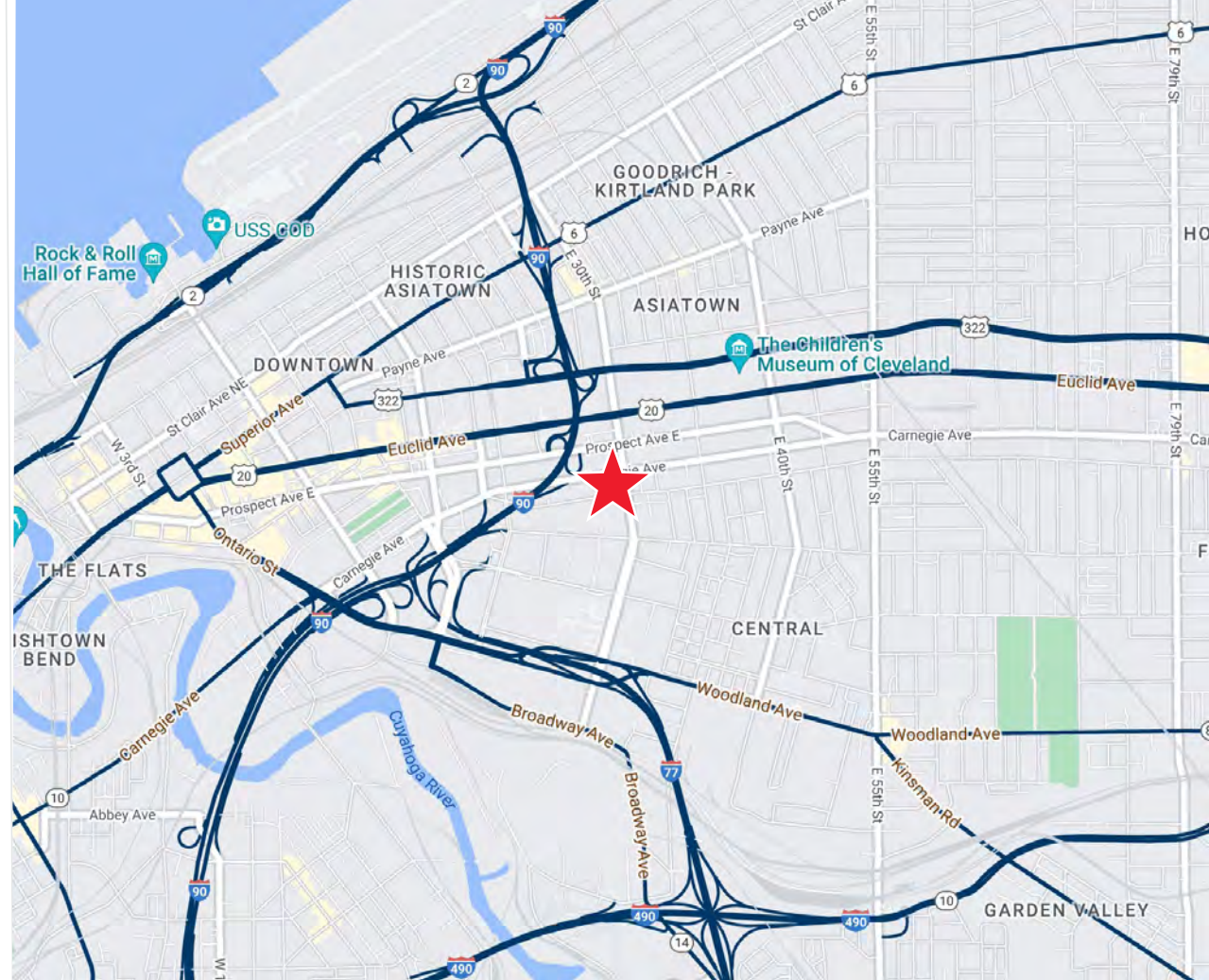
- Incredible location just off I-90 and near the Cleveland Clinic's main campus
- Located within the MidTown District, Campus District, and Health-Tech Corridor
- Great flexibility in layout with seven (7) bathrooms spread throughout the single-story footprint
- Ample parking with spaces in front of building and in separate neighboring lot

## AVAILABLE SPACE

9,951 SF  
Divisible to 4,000 SF

## LEASE RATE

\$15.00 SF



## DEMOGRAPHICS

**252,812**

Population  
(2022 | 5 Mile)

**36.3**

Median Age  
(2022 | 5 Mile)

**113,404**

Households  
(2022 | 5 Mile)

**\$55,419**

Household Income  
(2022 | 5 Mile)

**11,553**

Total Businesses  
(2022 | 5 Mile)

**186,695**

Total Employees  
(2022 | 5 Mile)



# 2900 CARNEGIE AVE

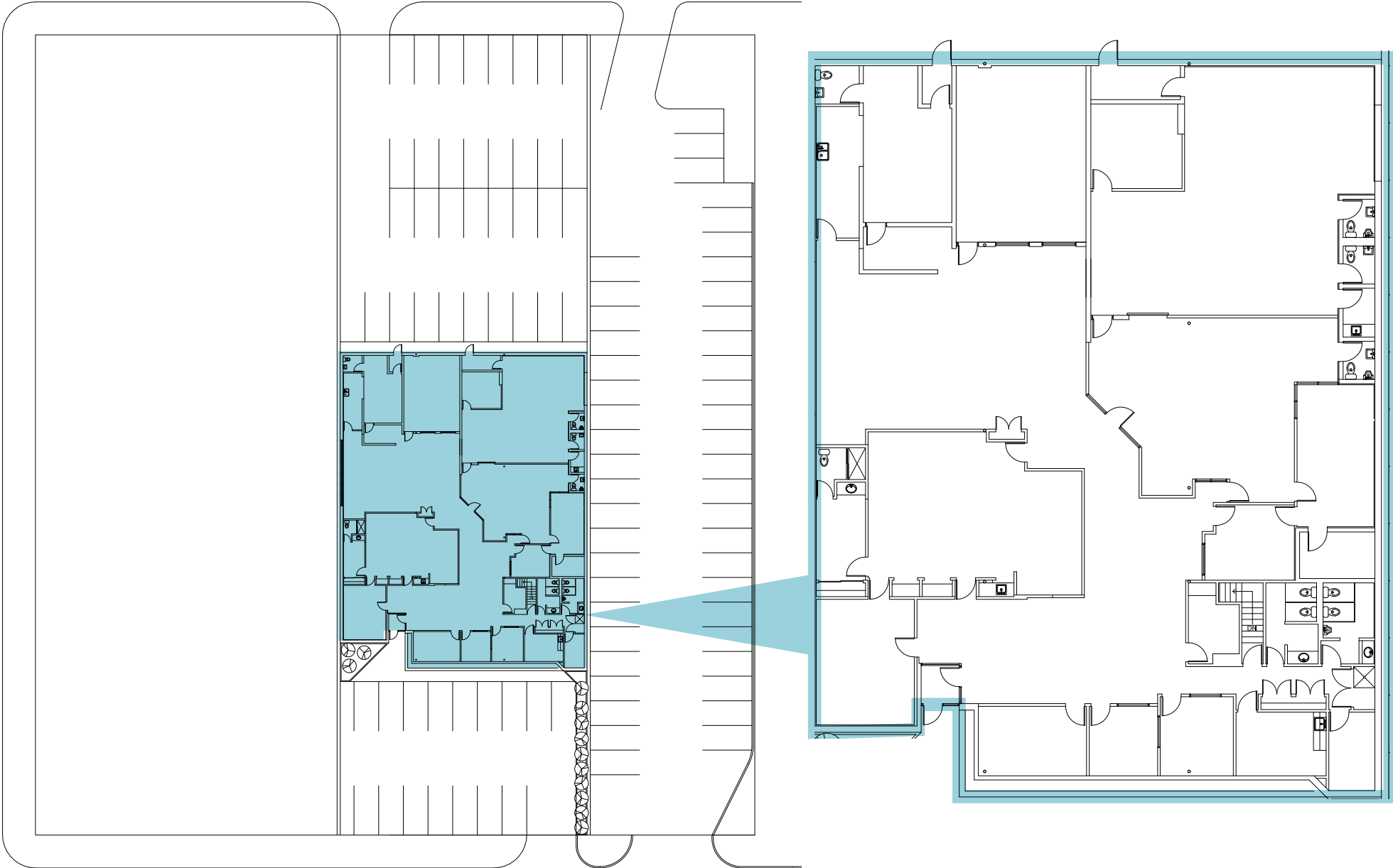
CLEVELAND, OHIO 44115



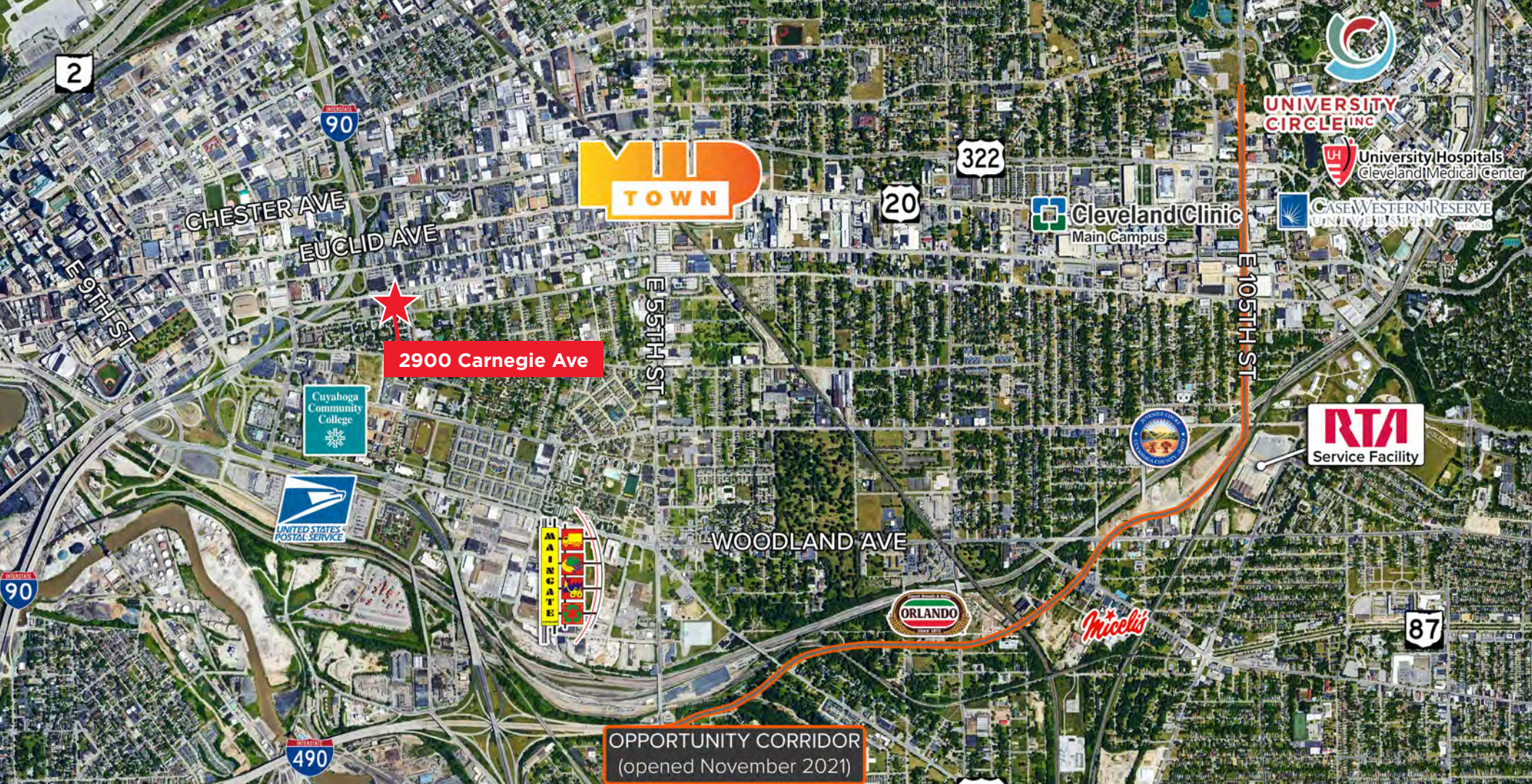
CEDAR AVE

E 130TH STREET

CARNEGIE AVE







FOR LEASE

# INCREDIBLE LOCATION OFFICE SPACE

2900 CARNEGIE AVENUE, CLEVELAND, OHIO 44115

JASON LAVER, SIOR  
Senior Vice President  
+1 216 525 1489  
jlaver@crescorealestate.com

BILL STEVENS  
Vice President  
+1 216 232 4100  
bstevens@crescorealestate.com

Cushman & Wakefield | CRESCO Real Estate  
3 Summit Park Drive, Suite 200,  
Cleveland, OH 44131  
crescorealestate.com



©2022 Cushman & Wakefield. All rights reserved. The information contained in this communication is strictly confidential. This information has been obtained from sources believed to be reliable but has not been verified. NO WARRANTY OR REPRESENTATION, EXPRESS OR IMPLIED, IS MADE AS TO THE CONDITION OF THE PROPERTY (OR PROPERTIES) REFERENCED HEREIN OR AS TO THE ACCURACY OR COMPLETENESS OF THE INFORMATION CONTAINED HEREIN, AND SAME IS SUBMITTED SUBJECT TO ERRORS, OMISSIONS, CHANGE OF PRICE, RENTAL OR OTHER CONDITIONS, WITHDRAWAL WITHOUT NOTICE, AND TO ANY SPECIAL LISTING CONDITIONS IMPOSED BY THE PROPERTY OWNER(S). ANY PROJECTIONS, OPINIONS OR ESTIMATES ARE SUBJECT TO UNCERTAINTY AND DO NOT SIGNIFY CURRENT OR FUTURE PROPERTY PERFORMANCE.