



THE HANNA BUILDING

1422 Euclid Avenue, Cleveland, Ohio 44115

Cleveland's Historic Playhouse Square District

THE HANNA BUILDING

Address

1422 Euclid Avenue
Cleveland, Ohio 44115

Lease Rate

\$16.00-\$18.00/SF FSG

Building Size

337,000 SF

Max Contiguous

Up to 48,000 SF

of Floors

Sixteen (16)

Security

24/7 Manned Security Guard

Parking

Attached Garage

Building Factor

10%

Year Built

1921

Year Refurbished

2000



THE HANNA BUILDING

Features & Amenities



Safe & Secure

24/7 Security Guard & Attached Parking Garage

On-Site Property Management

Building Conference Rooms

Easy Access to Major Routes

Close to I-77, I-90 & The Shoreway

Great Public Transportation

RTA Healthline & Bus Stop

The Residences at Hanna

103 One & Two Bedroom Apartment Units

The Lumen

318 One to Three Bedroom Apartment Units

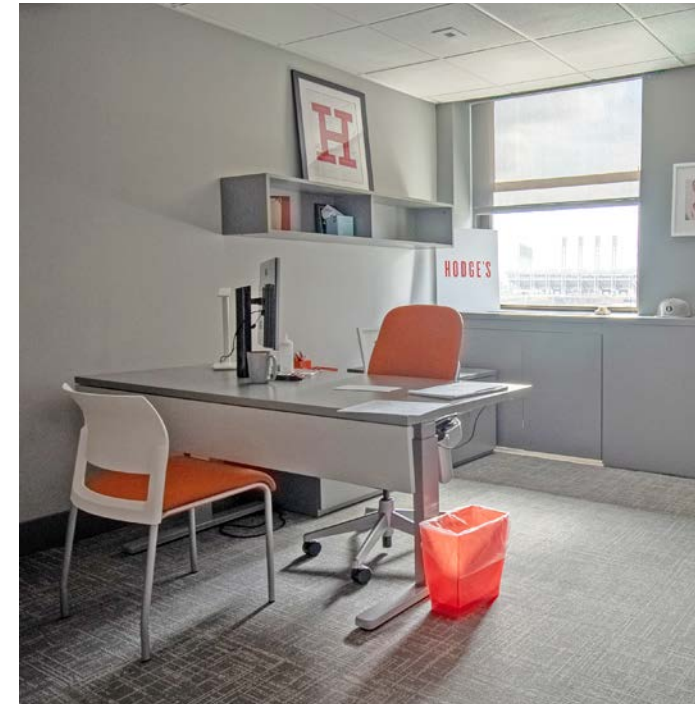


Cibrèo



THE HANNA BUILDING

Tenant Suite Examples



The Hanna Building has an array of flexible opportunities whether you're a non-profit looking for a small home-base office or a Fortune 500 corporation looking for your new HQ.

Come experience the historic feel of the neighborhood while working in the most modern office suites the Playhouse Square District has to offer.



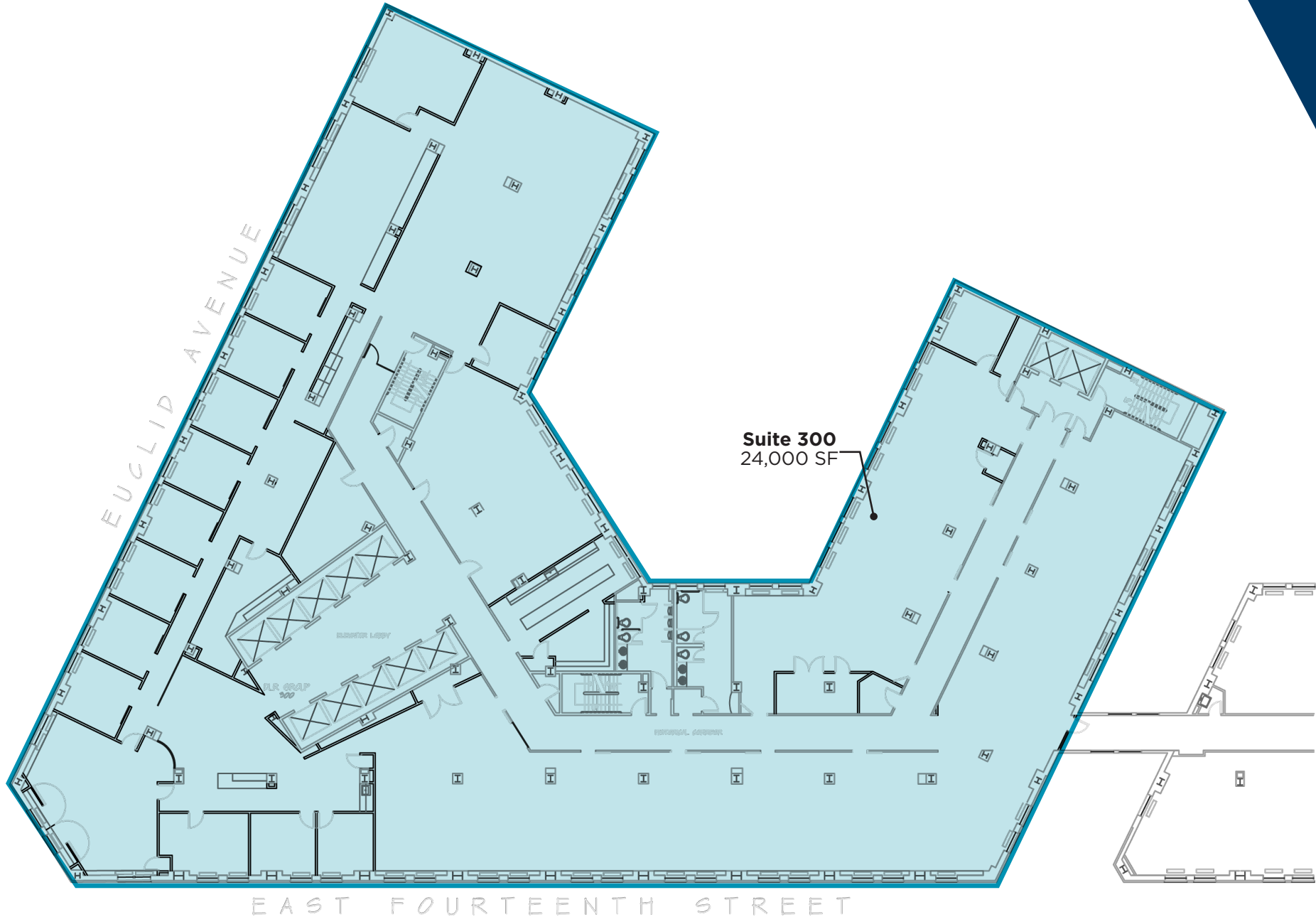
THE HANNA BUILDING

First Floor | Retail Max Contiguous: 2,105 SF



THE HANNA BUILDING

Third Floor | Max Contiguous: 24,000 SF



THE HANNA BUILDING

Fourth Floor | Backstage at Playhouse Square Coworking



Virtual Tour

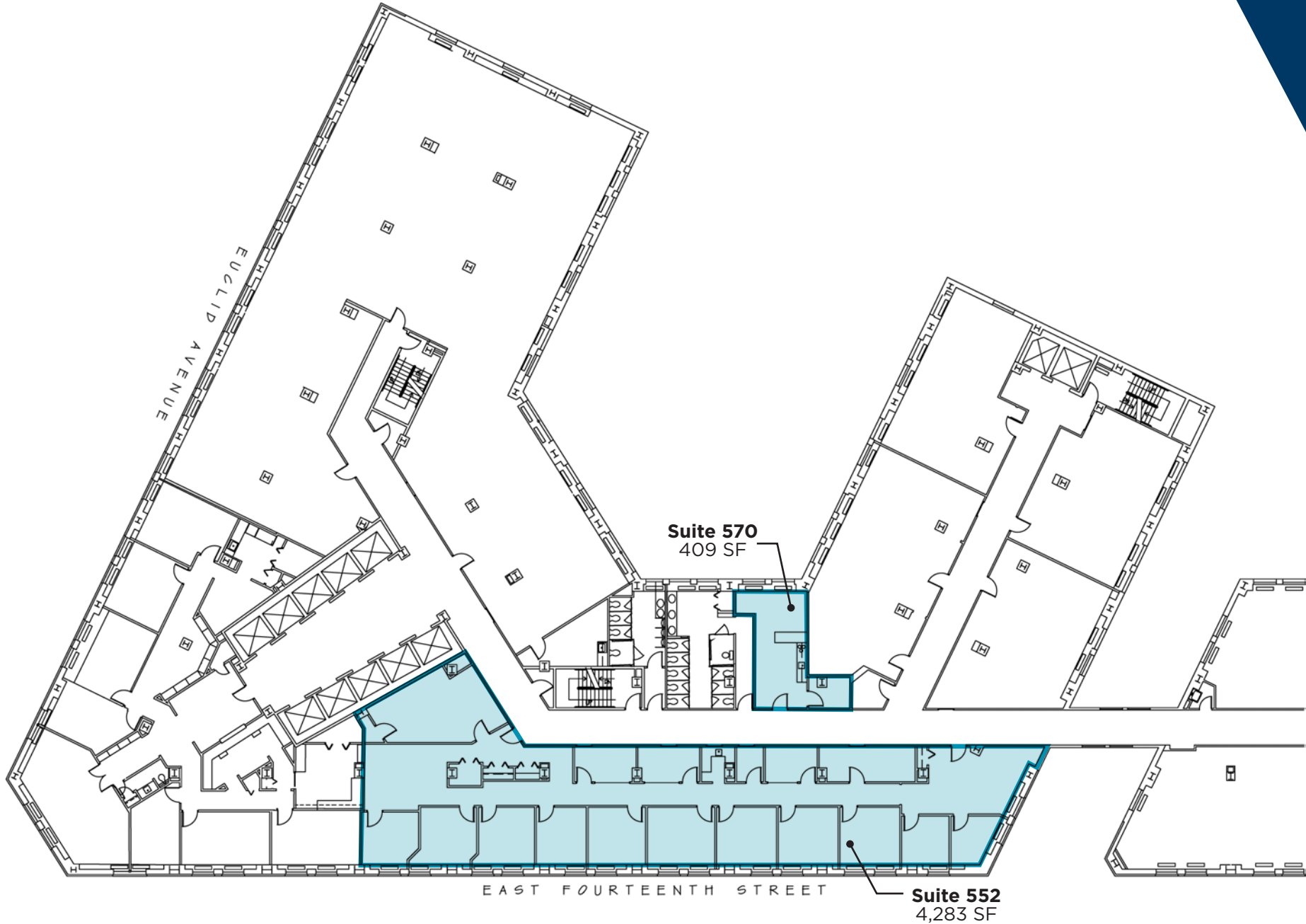
Backstage at Playhouse Square

- \$750 per office
- \$450 per cubicle
- Flexible lease term
- All furniture included



THE HANNA BUILDING

Fifth Floor | Max Contiguous: 4,283 SF



THE HANNA BUILDING

Sixth Floor | Max Contiguous: 13,197 SF



THE HANNA BUILDING

Seventh Floor | Max Contiguous: 5,740 SF



THE HANNA BUILDING

Eighth Floor | Max Contiguous: 5,067 SF



THE HANNA BUILDING

Ninth Floor | Max Contiguous: 11,285 SF



Suite 900
9,967 SF

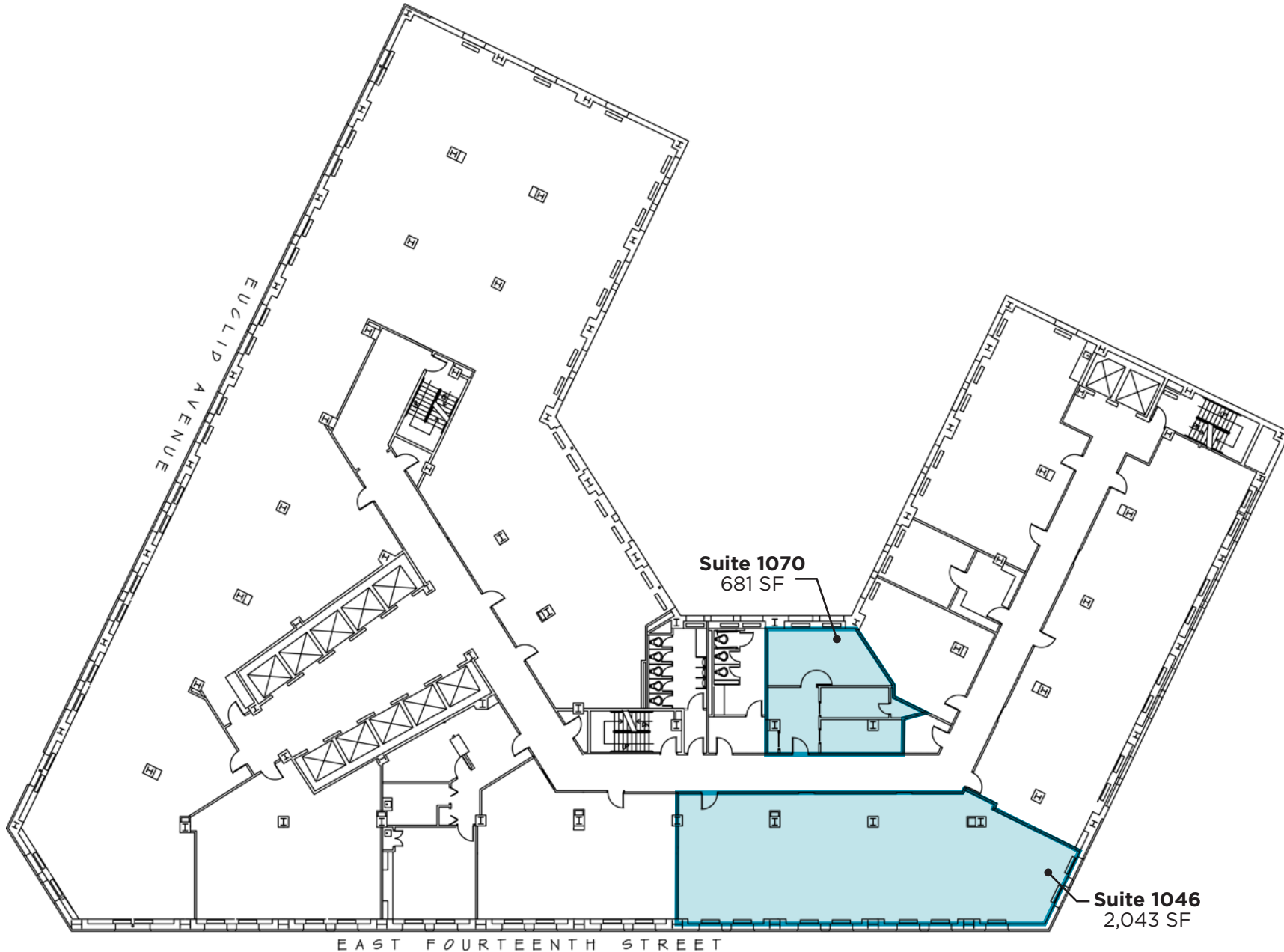
Suite 904
1,318 SF

EUCLID AVENUE

EAST FOURTEENTH STREET

THE HANNA BUILDING

Tenth Floor | Max Contiguous: 2,043 SF



THE HANNA BUILDING

Eleventh Floor | Max Contiguous: 5,991 SF



Suite 1104
5,991 SF

Suite 1160
1,581 SF

Suite 1150
2,243 SF

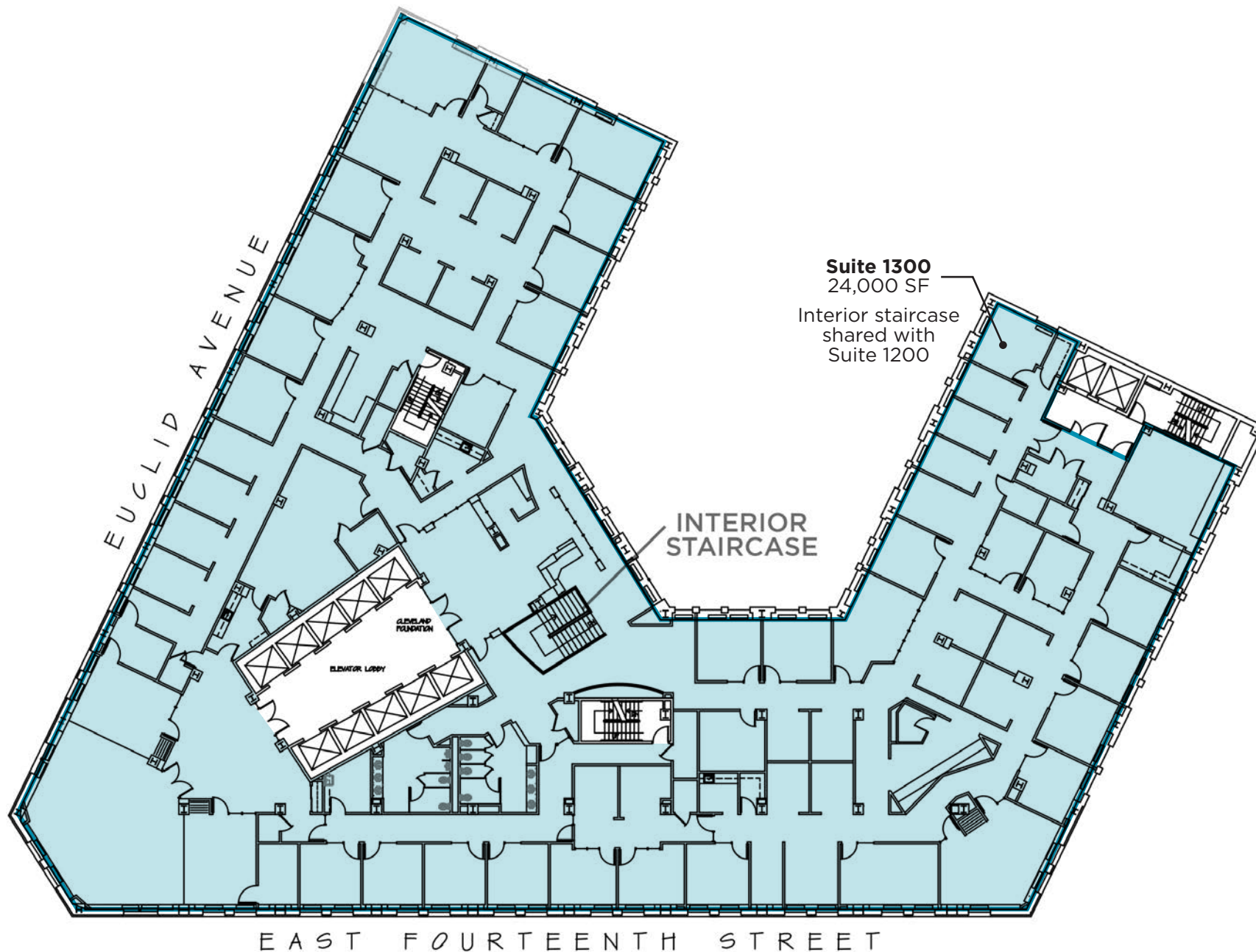
THE HANNA BUILDING

Twelfth Floor | Max Contiguous: 48,000 SF



THE HANNA BUILDING

Thirteenth Floor | Max Contiguous: 48,000 SF



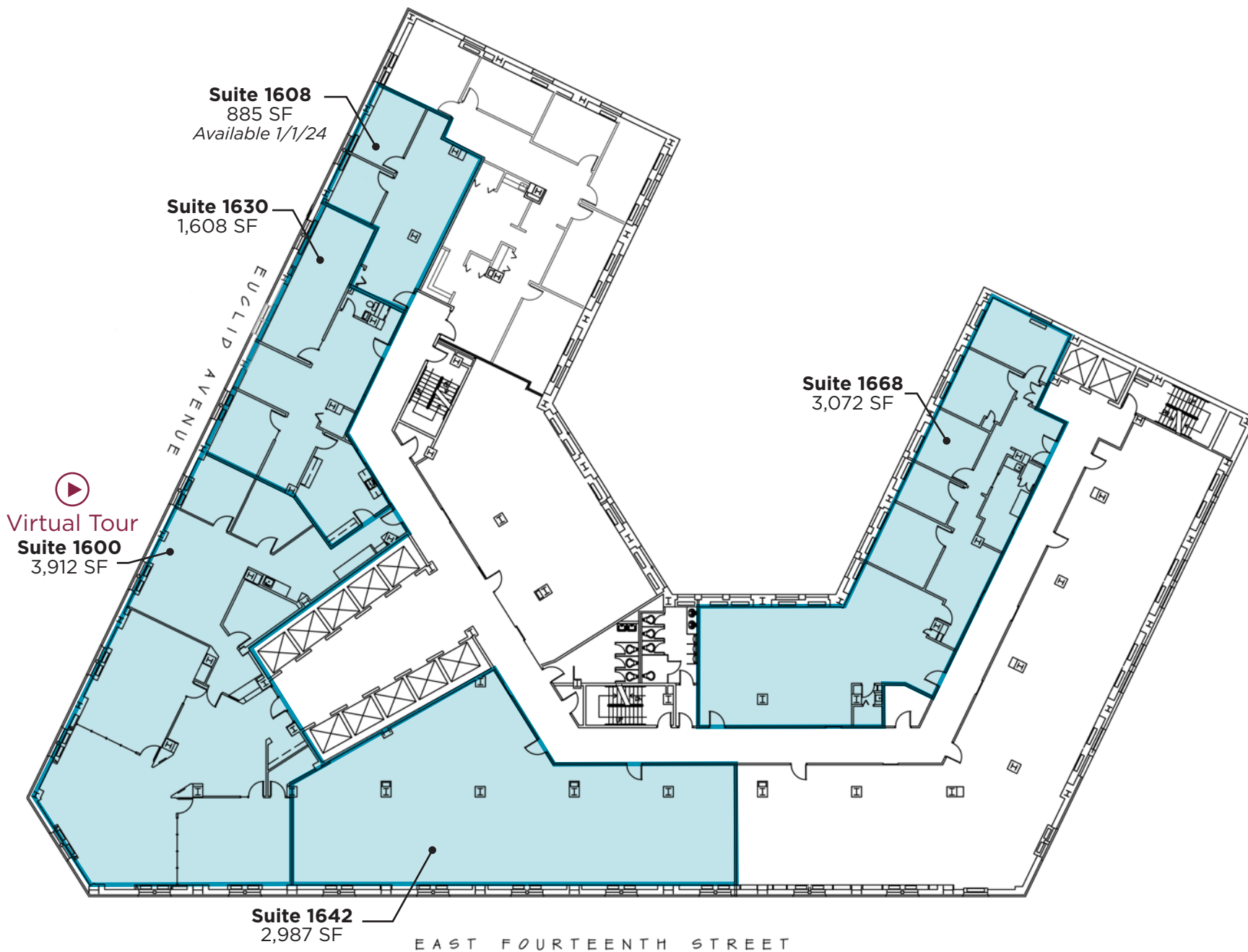
THE HANNA BUILDING

Fifteenth Floor | Max Contiguous: 1,938 SF



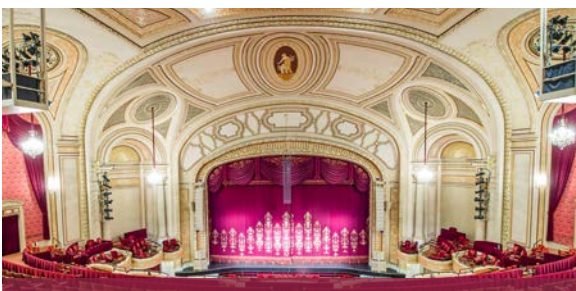
THE HANNA BUILDING

Sixteenth Floor | Max Contiguous: 9,392 SF

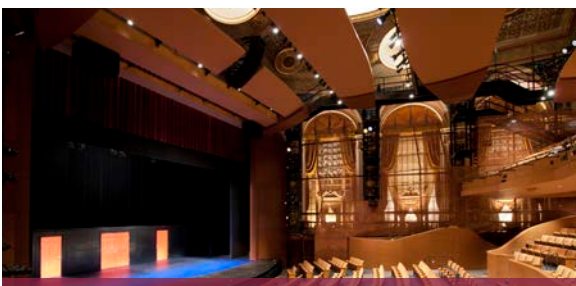




KEYBANK STATE THEATRE



CONNOR PALACE



ALLEN THEATRE



HANNA THEATRE



MIMI OHIO THEATRE

PSQ HISTORY

Playhouse Square's original five (5) venues (Mimi Ohio, Connor Palace, KeyBank State, Allen and Hanna) were constructed in the 1920s in a mere 19 months. Impacted by the rise of television and population flight to suburbia, by 1968-69 all but the Hanna were eventually boarded up, as entertainment also moved to the suburbs. But in the 1970s, a grass-roots effort saved the historic venues from the wrecking ball, restoring and re-opening the theaters one by one, ushering in a new era of downtown revitalization, which was heralded by the media as "one of the top 10 successes in Cleveland history."

KEYBANK STATE THEATRE

Purpose: Movies & Vaudeville

Style: Combines Roman, Greek & European Baroque

Features: Four 50-foot murals by American Modernist James Daugherty (1890-1974). Fifth mural by Arnold Englander. Total length of lobby from street to theatre is 320 feet (said to be the longest in the world)

First Show: Movie- A Polly with a Past & Buster Keaton short, Neighbors. Hyman Spitalny and his orchestra

Originally Opened: February 5, 1921

CONNOR PALACE

Purpose: Vaudeville (B.F. Keith);(Modified for movies, 1926)

Style: French Imperial

Features: Grand Hall, Czechoslovakian crystal chandeliers, blue urn made in Serves, France before WWI. Seven floors of dressing rooms backstage

First Show: Vaudeville- Elsie Janis, the Cansinos, and Grace Hayes, several additional acts and a big band. (Orch. seat was \$1.65)

Originally Opened: November 6, 1922

ALLEN THEATRE

Purpose: Movies

Style: Italian Renaissance

Features: One of the few "daylight atmospheric" theaters in the country. Side boxes decorative only

First Show: Silent movie- The Greatest Love- Phillip Spitalny and 35 piece orchestra

Originally Opened: April 1, 1921

HANNA THEATRE

Purpose: Traditional Theater

Style: Italian Renaissance

Features: Interior features bronze trimming and marble corridors. Original ceiling- coffered Roman- remains today

First Show: Play- Mark Twain's The Prince and The Pauper starring William Haversham

Originally Opened: March 28, 1921

MIMI OHIO THEATRE

Purpose: Traditional Theater

Style: Italian Renaissance

Features: Italian Renaissance lobby contained 3 murals by Sampitrotti, entitled "Cycle of Venus." Two paintings by P. Pizzi, in balcony of 14th century Venetian designed auditorium (All lost in lobby fire of 1964)

First Show: Play- The Return of Peter Grimm with David Warfield

Originally Opened: February 14, 1921

PLAYHOUSE SQUARE

Unique Features



PLAYHOUSE SQUARE “BLADE” SIGN

The Playhouse Square “blade” sign replaced the similarly shaped “Playhouse Square Center” sign on the Loews building. This version, though larger, is much more energy efficient. It runs off the same amount of energy as two (2) toasters.

GE CHANDELIER

North America’s largest outdoor chandelier is 20 feet tall, 8,500 pounds, and made up of 4,200 crystals.



**MORE THAN
1,000,000 GUESTS
EACH YEAR**

1,000+

**ANNUAL EVENTS TAKE
PLACE IN PLAYHOUSE
SQUARE DISTRICT**



**LARGEST PERFORMING
ARTS CENTER IN
THE COUNTRY
(OUTSIDE OF NEW YORK)**



**45K+
TICKET HOLDERS
ANNUALLY**

PLAYHOUSE SQUARE

DINING

- 1942 Tacos & Tequilas
- Bin216
- Cibreo
- Corbo's Bakery
- Cowell & Hubbard
- District
- The Fruit Stand
- Ghost Light Restaurant & Lounge
- Green Rooster Farms
- Hofbrauhaus
- Parnell's Pub
- Phuel Cafe
- Republic Food & Drink
- Sittoo's
- Starbucks
- Subway
- Yours Truly Restaurant
- Zaytoon Lebanese kitchen

ENTERTAINMENT

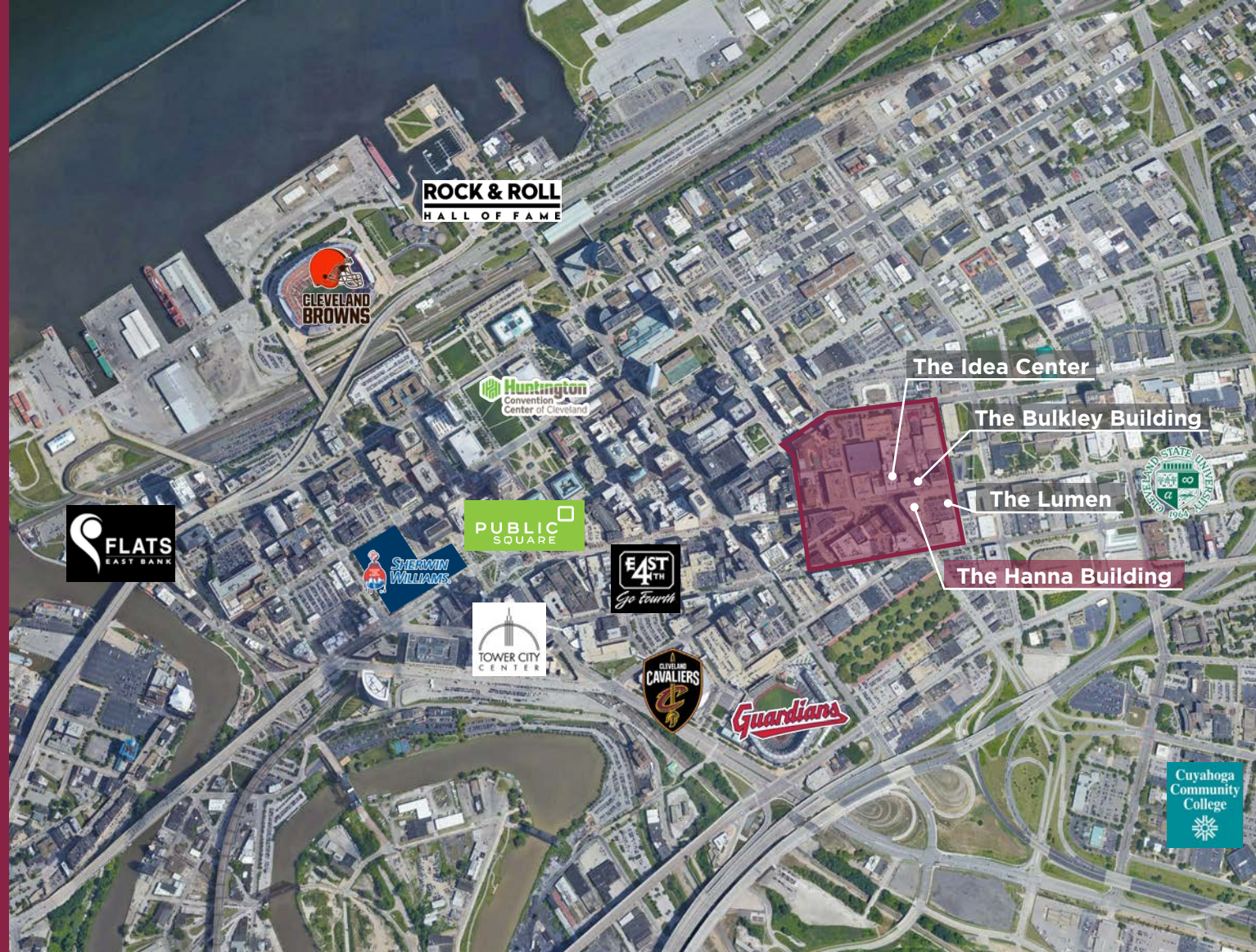
- Allen Theatre
- Connor palace
- Hanna theatre
- Kennedy's Theatre
- KeyBank State Theatre
- MIMI Ohio Theatre
- The Outcalt Theatre
- The Helen
- Westfield Studio Theatre

BANKING

- Chase Banking
- US Bank

STAY

- Residences at Hanna
- The Lumen
- Crowne Plaza Hotel



TENANT PARKING

17 Parking Options with over 3K Parking Spaces



CONTACT	DAILY	EARLY BIRD	MONTHLY	RESERVED
1 Playhouse Square Garage 216.640.8770	\$18.00	\$9.00 (8:30AM)	\$170.00	\$215.00
2 Hanna Garage 216.621.5193	\$10.00	--	\$185.50	\$211.50
3 U.S. Bank Garage 216.696.5311	\$12.00	--	--	--
4 Halle Building Garage 216.241.2139	\$13.00	\$6.00 (8:30AM)	\$190.00	--
5 Platinum Parking (1743 East 17th Street) 216.539.1292	\$6.00	--	\$97.20 \$124.20	--
6 Shaia's Parking (Chester Avenue) 216.621.0321	\$6.00 \$16.00 overnight	--	\$110.00 6AM-6PM Weekdays	--
7 Platinum Parking (1600 Payne Avenue) 216.539.1292	\$7.00	--	\$110.00 145.80	--
8 Shaia's Parking (1444 Payne Avenue) 216.621.0328	\$6.00	--	\$100.00 6AM-6PM Weekdays	\$125.00 24/7
9 Shaia's Parking (E. 13th Street & Chester Avenue) 216.621.0328	\$6.00	--	--	--
10 Platinum Parking (1374 Chester Ave) 216.539.1292	\$7.00	--	\$130.00 no 24-hour access	--
11 Platinum Parking (Lot 806) (1832 E. 13th St) 216.539.1292	\$9.00	--	\$129.60 no 24-hour access	--
12 Shaia's Parking (Prospect Avenue & E. 17th St) 216.621.0328	\$8.00	\$6.00 (8:30AM)	\$140.00 Limited	\$150.00
13 Platinum Parking (Lot 106) (1416 Prospect Ave) 216.539.1292	\$9.00	--	\$140.40	\$167.40 24/7
14 Platinum Parking (2171-2199 E. 14th St) 216.539.1292	\$8.00	--	\$118.80	\$145.80
15 Platinum Parking (E. 14th Street & Prospect Avenue) 216.539.1292	--	--	\$124.20	--
16 Platinum Parking (1234 Bolivar Road)	\$8.00	--	\$108.00	\$135.00 24/7
17 Platinum Parking (1107 Prospect Avenue)	\$8.00	--	\$97.20 \$124.20 24hr access	--



Disclaimer: Parking rates and contact information current as of July 2022. Rates subject to change without notice: Please note that parking information is for daytime/normal business hours (8 am - 6 pm)



7AM

Eat breakfast at
Green Rooster Cafe

12PM

Grab Lunch at
Yours Truly Restaurant

3PM

Enjoy one of the many free classes
offered on at the U.S. Bank Plaza

7PM

See a Broadway
musical at
Connor Palace

10AM

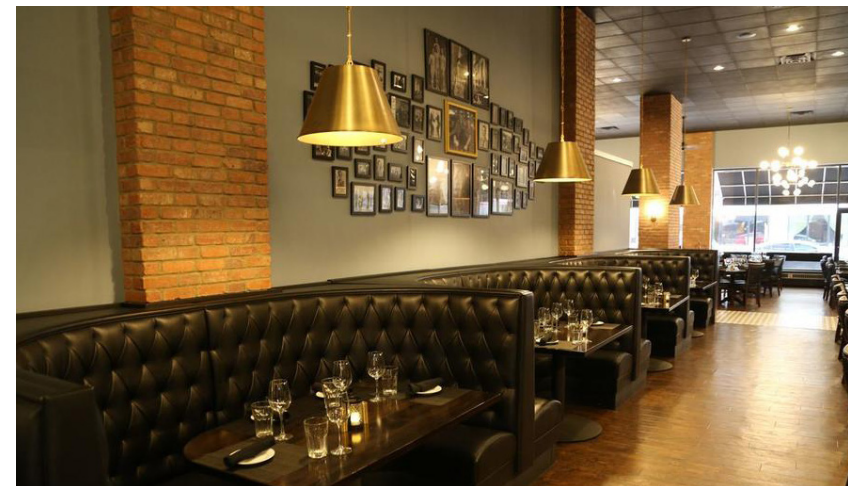
Try out yoga under
the GE Chandelier

2PM

Take your Starbucks run

5PM

Relax with cocktails and dinner
at Republic Food & Drink





CONNOR REDMAN

Vice President

+1 216 525 1493

credman@crescorealestate.com



ALEXANDER RUSSO, SIOR

Senior Vice President

+1 216 525 1495

arusso@crescorealestate.com



Playhouse Square®