

**PP# 901-35-006  
4.21 AC**

**PP# 901-35-011  
1.95 AC**

**PP# 901-39-036  
7.38 AC**

# **13.54 AC DEVELOPMENT OPPORTUNITY**

**4799 LANDER ROAD & W. FAIRVIEW DRIVE, ORANGE VILLAGE, OHIO 44022**

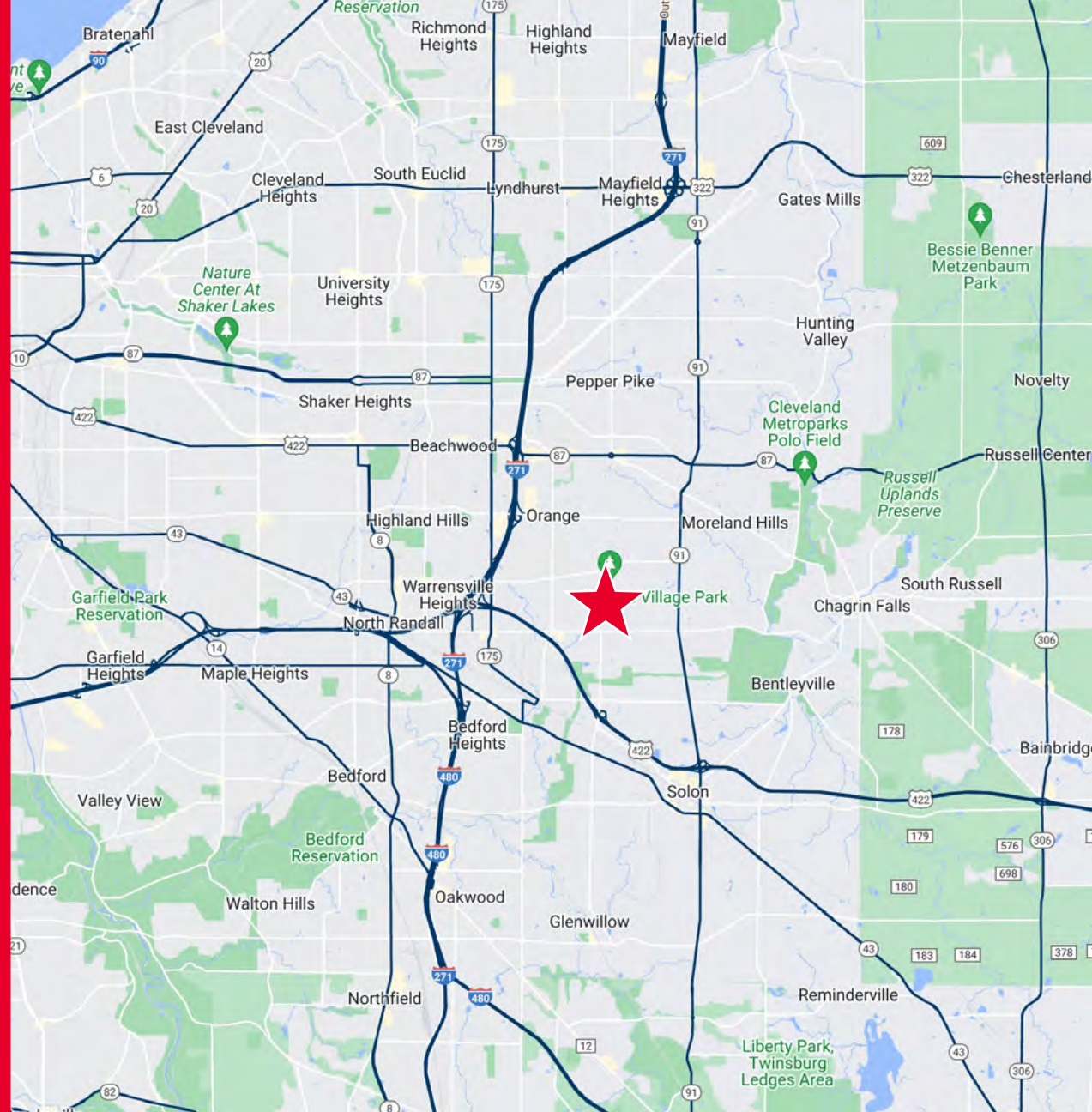


# 4799 LANDER ROAD & W. FAIRVIEW DRIVE

ORANGE VILLAGE, OHIO 44022

## HIGHLIGHTS

- Three Parcels:
  - PP# 901-35-006** - 4.21 AC  
Approximate lot dimensions 250' (frontage on Lander) x 771' depth
  - PP# 901-39-036** - 7.38 AC  
Approximate lot dimensions 677' width x 475' depth
  - PP# 901-35-011** - 1.95 AC  
Approximate lot dimensions 220' width x 410' depth
- Combined depth of **PP# 901-35-006** and **PP# 901-39-036** is approximately 1,246'
- Structures on the site are a meeting hall of approximately 7,119 SF built in 1989, renovated in 2007 & 2016 and a 360 SF storage shed
- Beautiful wooded private site
- Zoned: U-1 Single Family



**116,695**  
Population  
(2024 | 5 Mile)



**50,026**  
Households  
(2024 | 5 Mile)

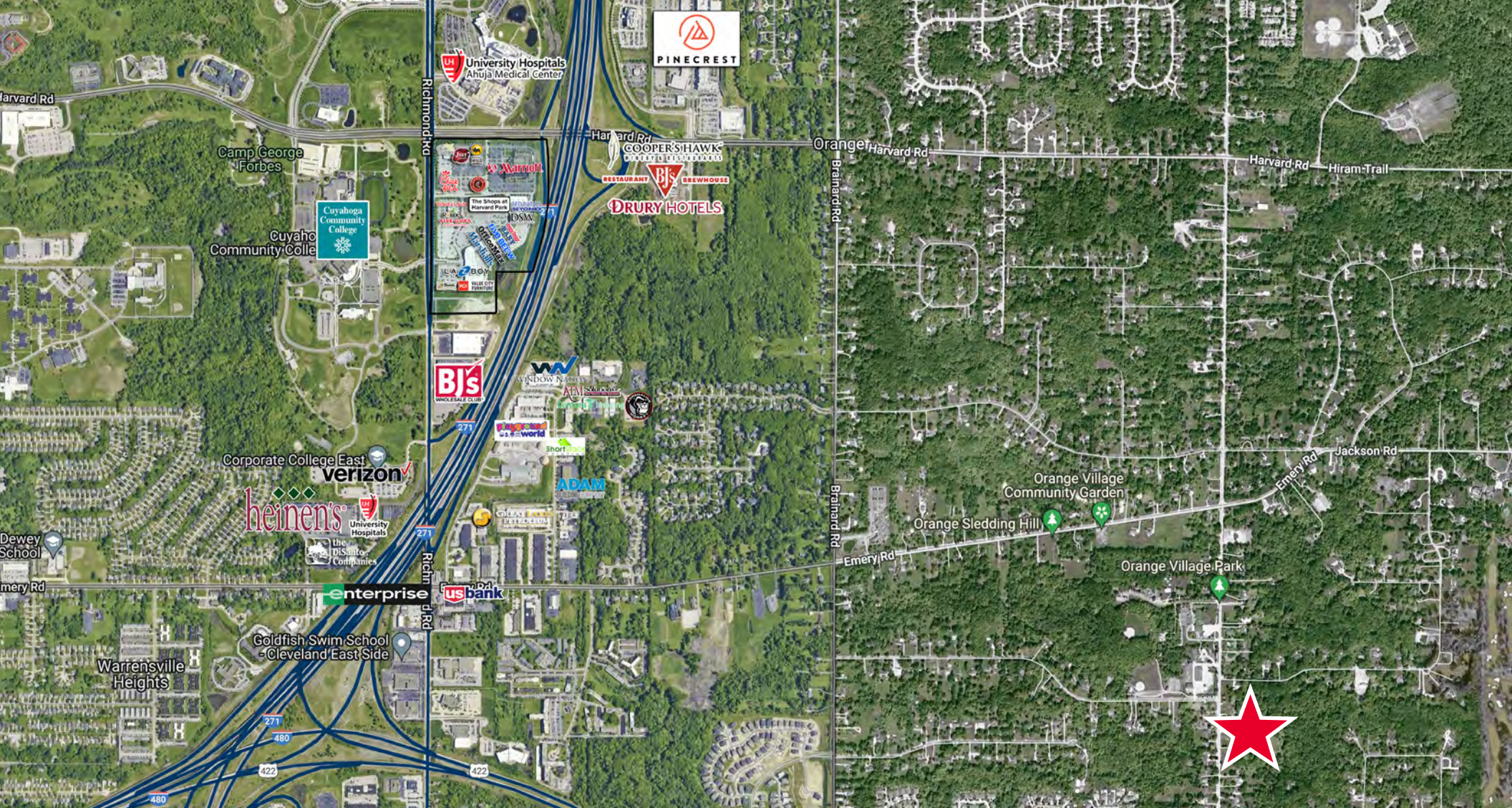


**\$99,086**  
Med. Household Income  
(2024 | 5 Mile)



**113,224**  
Total Employees  
(2024 | 5 Mile)





# 13.54 AC DEVELOPMENT OPPORTUNITY

4799 LANDER ROAD & W. FAIRVIEW DRIVE, ORANGE VILLAGE, OHIO 44022

NANCI V. FERRANTE  
 Senior Vice President  
 nferrante@crescorealestate.com  
 +1 216 525 1496

Cushman & Wakefield | CRESCO Real Estate  
 6100 Rockside Woods Blvd, Suite 200  
 Cleveland, OH 44131  
 crescorealestate.com



©2024 Cushman & Wakefield. All rights reserved. The information contained in this communication is strictly confidential. This information has been obtained from sources believed to be reliable but has not been verified. No warranty or representation, express or implied, is made as to the condition of the property (or properties) referenced herein or as to the accuracy or completeness of the information contained herein, and same is submitted subject to errors, omissions, change of price, rental or other conditions, withdrawal without notice, and to any special listing conditions imposed by the property owner(s). Any projections, opinions or estimates are subject to uncertainty and do not signify current or future property performance.