



FORMER HQ FOR SALE

# PROMINENT CORNER OFFICE BUILDING

2930 EUCLID AVENUE, CLEVELAND, OHIO 44115



# 2930 EUCLID AVE

CLEVELAND, OH 44115

## OVERVIEW

- Two (2) floors plus full basement
- Prominent corner location in Campus District on the edge of Midtown
- Excellent visibility on Euclid Avenue with 5,921 vehicles per day
- 39 dedicated parking spaces in attached surface lot
- Located on the RTA Healthline
- Close proximity to area amenities
- Located in a Qualified Opportunity Zone, potentially Historic Tax-Credit eligible

## AVAILABLE SPACE

15,000 SF

## SALE PRICE

\$775,000 (\$52/SF)



## DEMOGRAPHICS

**243,007**

Population  
(2022 | 5 Mile)

**35.1**

Median Age  
(2022 | 5 Mile)

**109,373**

Households  
(2022 | 5 Mile)

**\$56,581**

Household Income  
(2022 | 5 Mile)

**11,303**

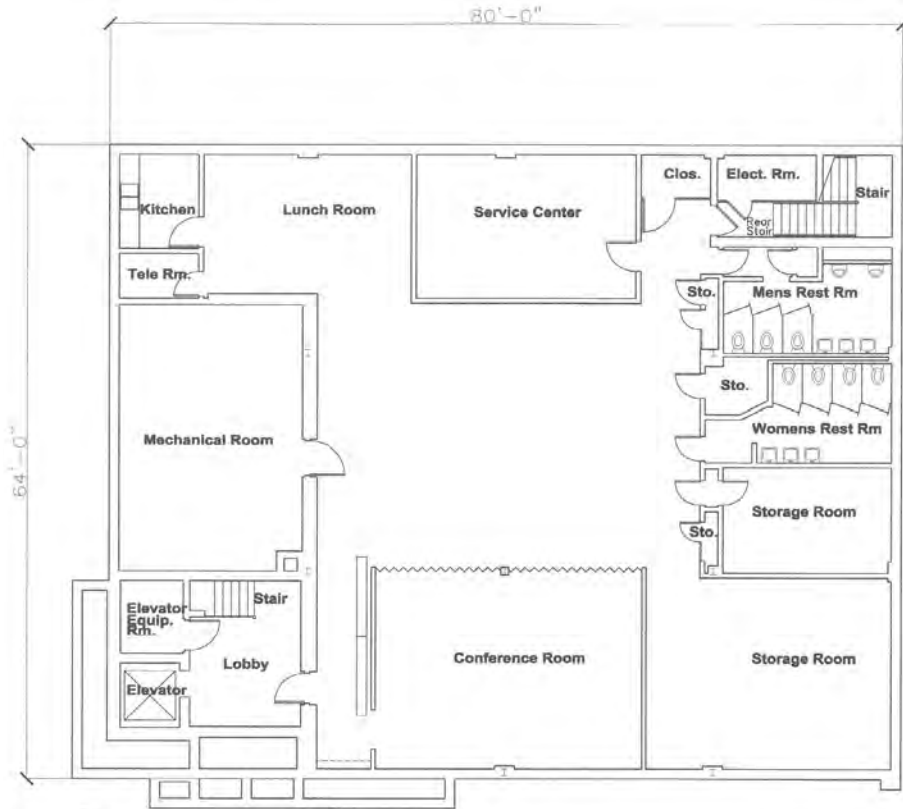
Total Businesses  
(2022 | 5 Mile)

**182,863**

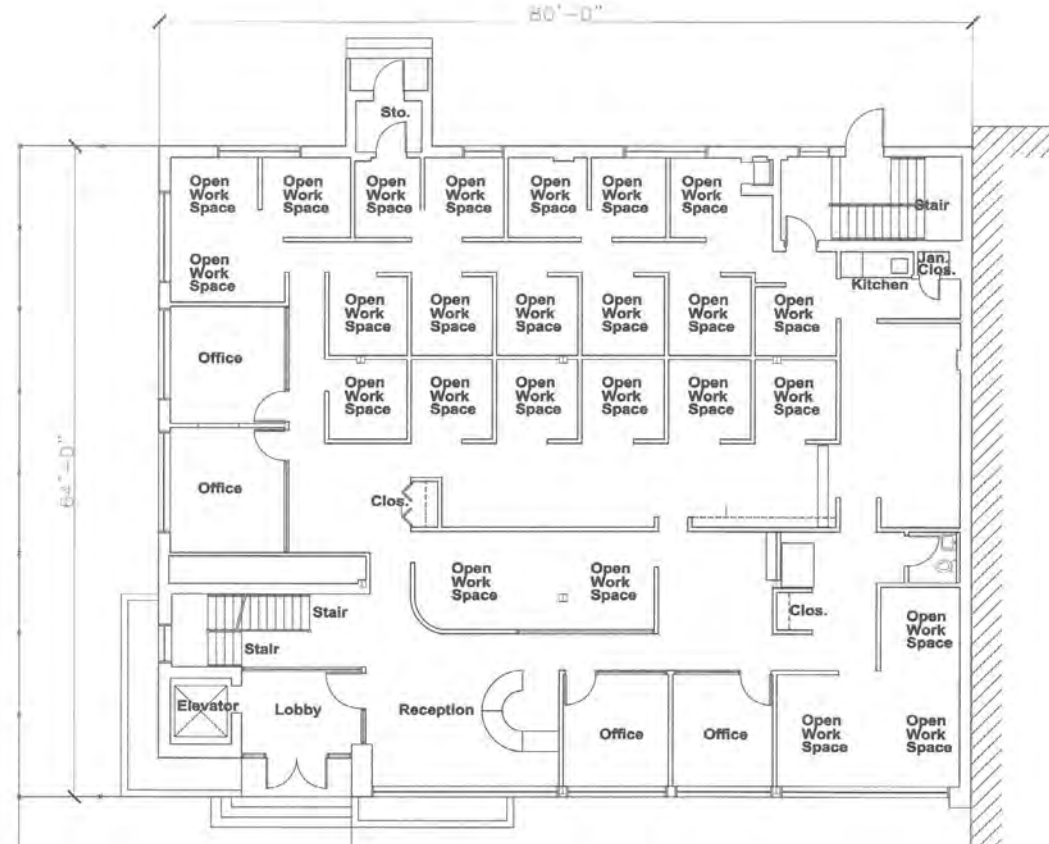
Total Employees  
(2022 | 5 Mile)

# 2930 EUCLID AVE

FLOOR PLANS



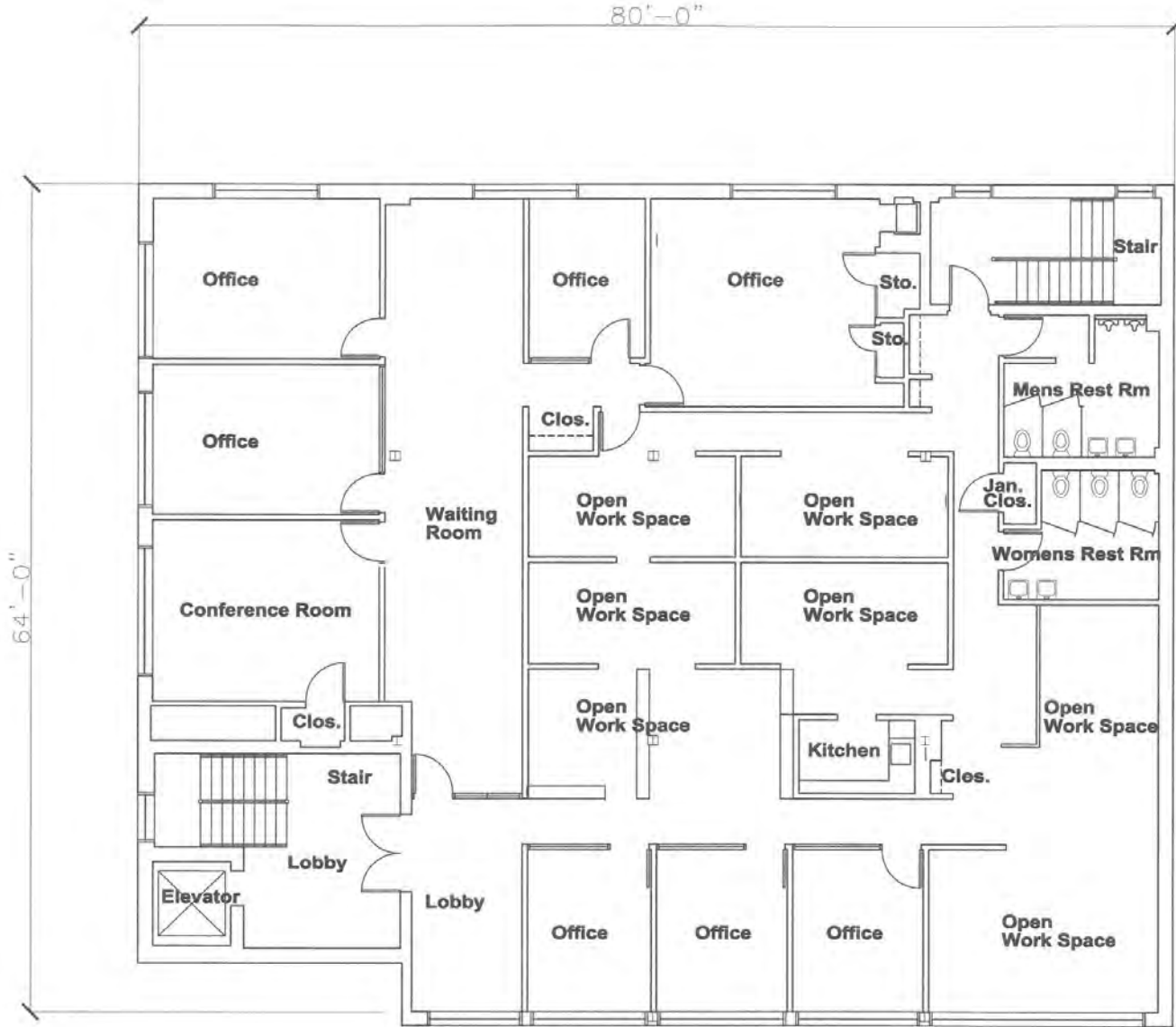
**LOWER LEVEL**



**FIRST FLOOR**

# 2930 EUCLID AVE

FLOOR PLANS



## SECOND FLOOR



# 2930 EUCLID AVE

SPACE POTENTIAL





# 2930 EUCLID AVE

LOCATION



Flats East Bank

MARSHVILLE PUNCH BOWL SOCIAL  
WELCOME TO THE FARM  
Flight John Boy

Warehouse District

insomnia cookies  
C  
STARBUCKS COFFEE  
TAZA  
ROCK & ROLL HALL OF FAME  
CLEVELAND BROWNS  
GREAT LAKES Science Center  
Stay Curious.

Future Home of Sherwin Williams Headquarters

Terminal Tower  
CHAMPS  
CHARLEYS  
DUNKIN'  
JACK CLEVELAND CASINO  
ROCKET Mortgage  
PROGRESSIVE FIELD  
DUNKIN'  
DUNKIN'  
DUNKIN'

East 4th  
FLANNERY'S  
MABEL'S BBQ  
COOLBAR  
GOMA  
HOUSE OF BLOOM  
THE CORNER ALLEY  
COOLBAR  
WONDER BAR  
HILARITIES  
GOMA

Playhouse Square  
HEIMEN'S  
YOURS TRULY  
ALEX THEATER  
METROPOLITAN  
zaytoon  
GHOST LIGHT  
THE FRUIT STAND  
WILD EAGLE

2930 Euclid Ave

ASIATOWN CLEVELAND

MID TOWN





**CONOR COAKLEY**  
Senior Vice President  
+1 216 232 4102  
ccoakley@crescorealestate.com

**COLE SORENSON**  
Associate  
+1 216 525 1470  
csorensen@crescorealestate.com

**Cushman & Wakefield | CRESCO Real Estate**  
6100 Rockside Woods Blvd, Suite 200,  
Cleveland, OH 44131  
[crescorealestate.com](http://crescorealestate.com)