



Medical Office Space for Lease

BETA OFFICE CAMPUS AVAILABILITY

6501 Wilson Mills Road & 767/771/777/781 Beta Drive, Mayfield Village, Ohio 44143



BETA OFFICE CAMPUS

- On-site maintenance available for immediate assistance
- High-speed broadband connectivity for seamless operations
- Conveniently located near shopping, dining, and major freeways (I-271 and I-90)
- Ideal for medical use, with 8,200 SF space suitable for a surgery center or other medical facilities*
- Willingness to collaborate with the municipality to secure additional signage for enhanced visibility
- Single-story layout provides easy accessibility

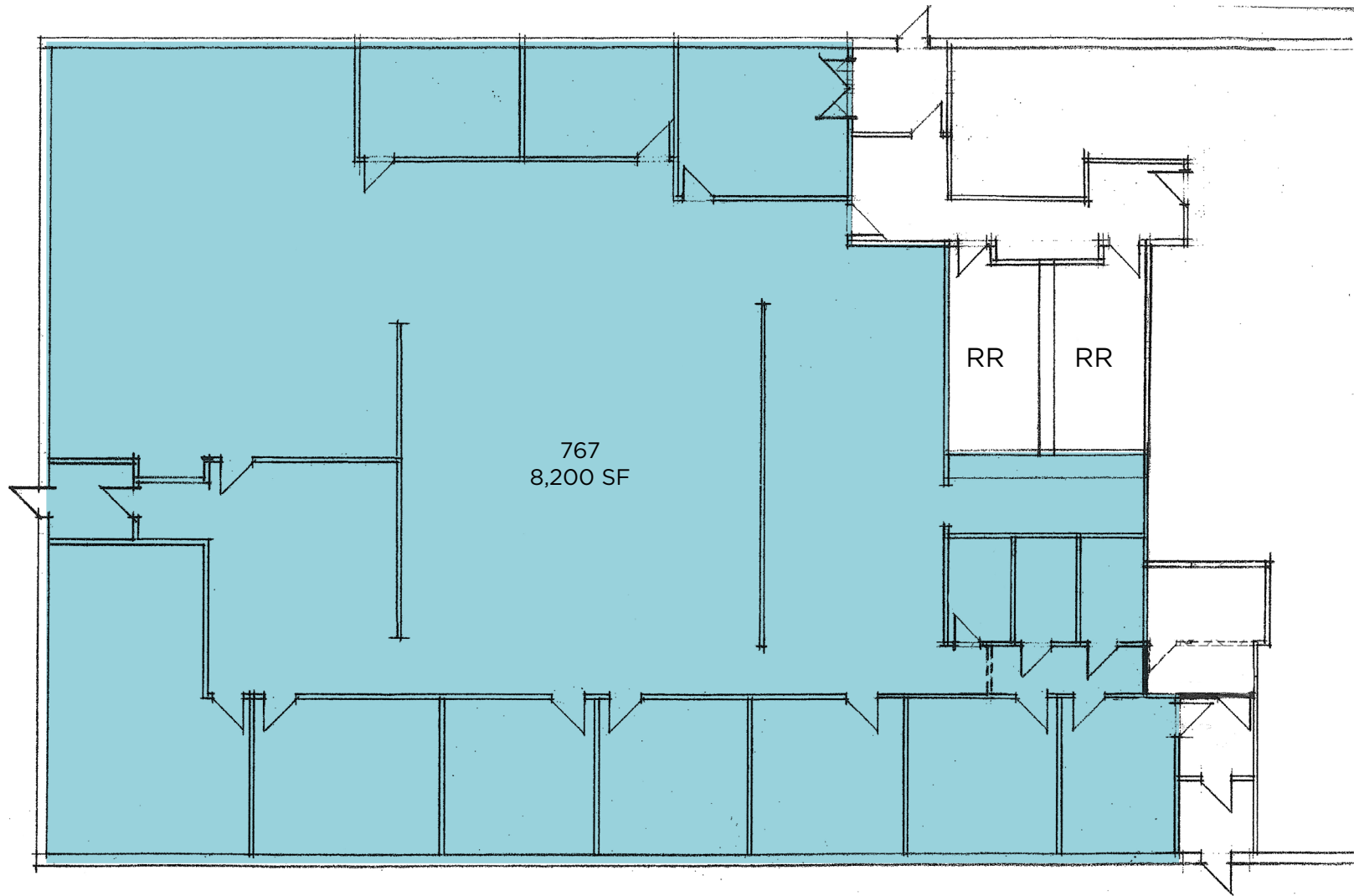
AVAILABLE SPACE

Unit	Office SF	Contiguous
767	8,200 SF	8,200 SF
781-A	1,020 SF	3,140 SF
781-C	2,120 SF	3,140 SF
781-H	370 SF	370 SF
781-N	2,010 SF	2,010 SF
6501 Wilson Mills	3,542 SF	3,542 SF

ASKING LEASE RATE \$16.00/SF MG

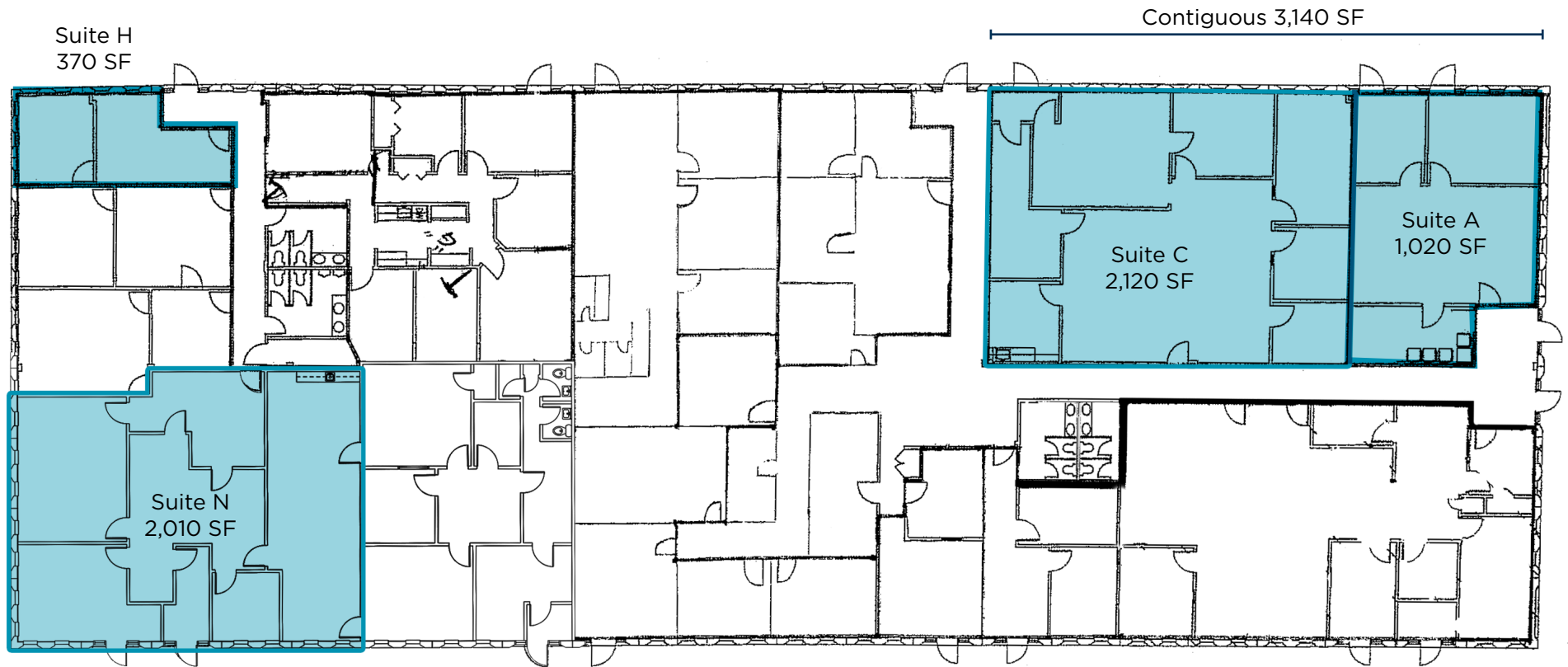
**Municipality is reviewing zoning to include medical use in the standard definition of "professional office"*

BETA OFFICE CAMPUS



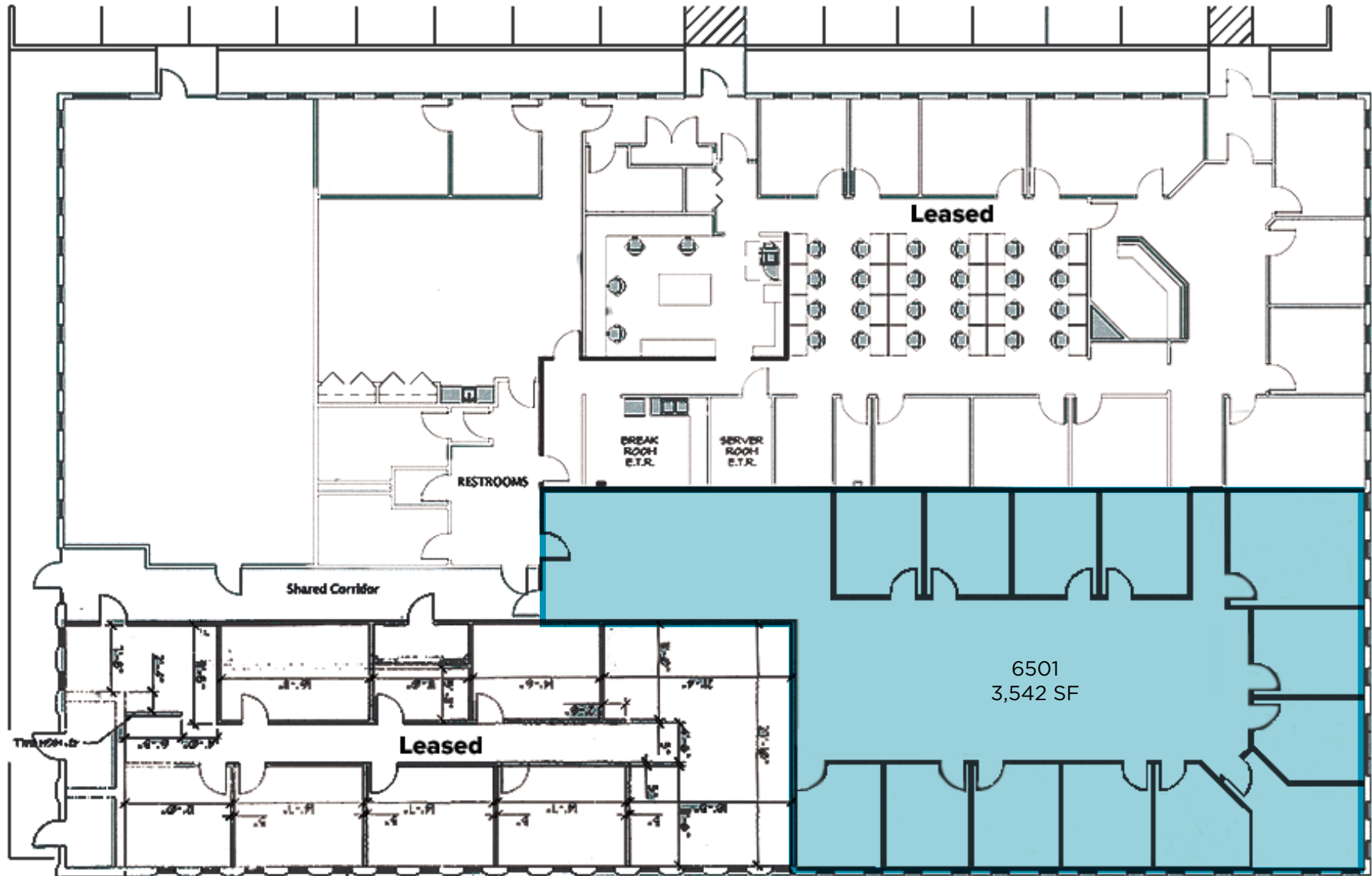
767 BETA DRIVE, MAYFIELD VILLAGE, OHIO

BETA OFFICE CAMPUS



781 BETA DRIVE, MAYFIELD VILLAGE, OHIO

BETA OFFICE CAMPUS



6501 WILSON MILLS, MAYFIELD VILLAGE, OHIO



NANCI V. FERRANTE, MCR
 Senior Vice President
 nferrante@crescorealestate.com
 +1 216 525 1496

ALEXANDER L. RUSSO, SIOR
 Senior Vice President
 arusso@crescorealestate.com
 +1 216 525 1495

6100 Rockside Woods Blvd, Suite 200
 Cleveland, Ohio 44131
 Main +1 216 520 1200
 crescorealestate.com



Independently Owned and Operated / A Member of the Cushman & Wakefield Alliance
 Cushman & Wakefield Copyright 2024. No warranty or representation, express or implied, is made to the accuracy or completeness of the information contained herein, and same is submitted subject to errors, omissions, change of price, rental or other conditions, withdrawal without notice, and to any special listing conditions imposed by the property owner(s). As applicable, we make no representation as to the condition of the property (or properties) in question. A licensee at Cushman & Wakefield | CRESCO may have an interest in the client entity offering this property for sale.